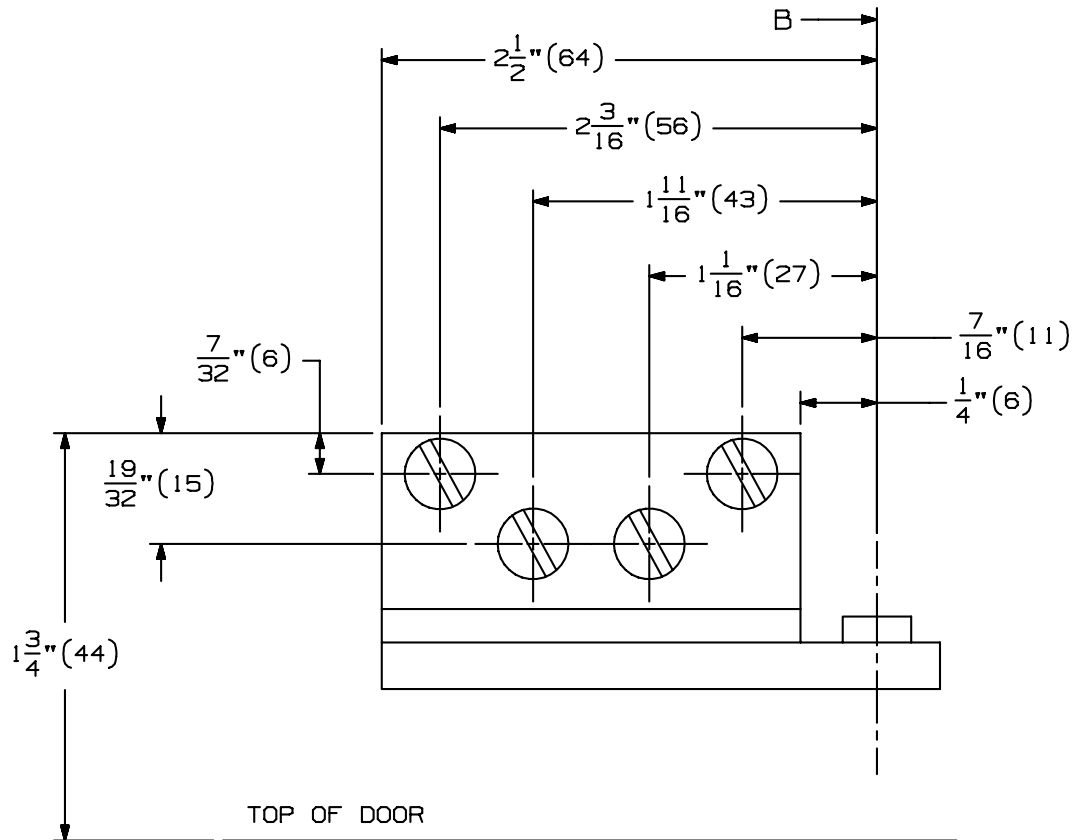


2. A. LOCATE "B" DIMENSION ON THE FACE OF THE FRAME. NOTE THAT THE "B" DIMENSION IS MEASURED FROM THE CENTERLINE OF THE HINGE AS SHOWN.
- B. FOR METAL FRAMES, USE #21 DRILL AND 10-32 TAP IN 4 PLACES. FOR WOOD FRAMES DRILL 1/8" PILOT HOLES IN 4 PLACES. MOUNTING HOLES SHOULD BE PREPARED IN THE FIELD.



3. A. LOCATE "A" & "C" DIMENSION ON THE DOOR. NOTE THAT THE "A" DIMENSION IS MEASURED FROM THE CENTERLINE OF HINGE AS SHOWN.
- B. DRILL THE 1/4" (6) DIAMETER THROUGH HOLES DOWN 3/8" (10) FROM THE TOP OF THE DOOR IN TWO PLACES. ON THE PULL SIDE OF DOOR, DRILL 13/32" (10) DIAMETER HOLE, 1 5/8" (41) DEEP FOR SEX BOLT. MOUNTING HOLES SHOULD BE PREPARED IN THE FIELD.
4. A. INSTALL ANGLE BRACKET ONTO STANDARD JAMB BRACKET WITH 10-32 x 1/2" FPHMS PROVIDED WITH THE ANGLE BRACKET.
- B. INSTALL THE CHANNEL ON THE DOOR WITH THE SHOCK SPRING TOWARDS THE HINGE EDGE OF DOOR.
- C. INSTALL THE ANGLE BRACKET TO THE FACE OF THE FRAME.

450 SERIES SURFACE OVERHEAD
HOLDER HINGE (PULL SIDE)
INSTALLATION TEMPLATE

IR GLYNN-JOHNSON®

NOTE: DIMENSIONS IN () ARE IN MILLIMETERS

TEMPLATE INST. 450JP.PG2_1
NUMBER:

DATE:
04-15-04

MOUNTING GROUPS 1 & 2 450 SERIES SURFACE OVERHEAD STOP & HOLDER

CAUTION: "A" & "B" DIMENSIONS ARE MEASURED FROM THE CENTERLINE OF PIVOT, NOT EDGE OF DOOR
 FOR DEAD STOP ADD 9/16" (14mm) TO THE "A" DIMENSION * NOT TO BE USED WITH SWINGCLEAR HINGES
 FOR SE STOPS USE HOLD-OPEN MOUNTING DIMENSION
 HO=HOLD-OPEN FOR HOLDERS, OPENING FOR STOPS
 I=ARM LENGTH FROM PIVOT CENTERLINE TO PIVOT CENTERLINE
 (FOR REFERENCE ONLY)

DEGREE	85 HO		90 HO		95 HO		100 HO		105 HO		110 HO		C	I		
	DIM.	DOOR OPENING	A	B	A	B	A	B	A	B	A	B				
451	IN.	18-23	2 13/16	4 7/8	2 9/16	4 5/8	2 5/16	4 7/16	2 1/8	4 3/16	1 15/16*	4 1/16*	1 3/4*	3 7/8*	14 3/4	8 1/4
	mm	457-584	71	124	65	117	59	113	54	106	49	103	44	98	375	210
452	IN.	23 1/16-27	4 3/16	6 1/8	3 7/8	5 13/16	3 9/16	5 9/16	3 5/16	5 5/16	3 3/16	5	3	14 13/16	16 3/8	10
	mm	585-686	106	156	98	148	90	141	84	135	81	127	76	122	416	254
453	IN.	27 1/16-33	8 1/4	7 7/16	7 13/16	7	7 7/16	6 11/16	7 1/8	6 5/16	6 7/8	6 1/16	6 5/8	5 13/16	17 5/8	14
	mm	687-838	210	189	198	178	189	170	181	160	175	154	168	148	448	356
454	IN.	33 1/16-39	12 1/16	9	11 9/16	8 1/2	11 1/8	8 1/16	10 3/4	7 5/8	10 3/8	7 5/16	10 1/16	7	19 3/8	18
	mm	839-991	306	229	294	216	283	205	273	194	264	186	256	178	492	457
455	IN.	39 1/16-45	15 3/4	10 3/8	15 3/16	9 5/16	14 5/8	9 3/16	14 1/8	8 3/4	13 11/16	8 7/16	13 3/8	8	20 7/8	21 3/4
	mm	992-1143	400	264	386	244	371	233	359	222	348	214	340	203	530	552
451	IN.	18-23	2 3/4	4 7/8	2 1/2	4 9/16	2 5/16	4 5/16	2 1/16	4 3/16	1 15/16*	4*	1 3/4*	3 7/8*	14 3/4	8 1/4
	mm	457-584	70	124	64	116	59	110	52	106	49	102	44	98	375	210
452	IN.	23 1/16-27	4 1/8	6 1/8	3 13/16	5 3/4	3 9/16	5 1/2	3 5/16	5 5/16	3 1/16	5 1/16	2 15/16	4 7/8	16 3/8	10
	mm	585-686	105	156	97	146	90	140	84	135	78	129	75	124	416	254
453	IN.	27 1/16-33	8 1/4	7 5/16	7 13/16	6 7/8	7 7/16	6 1/2	7 1/8	6 1/4	6 13/16	6	6 9/16	5 3/4	17 5/8	14
	mm	687-838	210	186	198	175	189	165	181	159	173	152	167	146	448	356
454	IN.	33 1/16-39	12	9	11 1/2	8 1/2	11 1/16	8	10 11/16	7 9/16	10 5/16	7 1/4	10	7	19 3/8	18
	mm	839-991	305	229	292	216	281	203	271	192	262	184	254	178	492	457
455	IN.	39 1/16-45	15 3/4	10 3/16	15 1/16	9 11/16	14 1/2	9 1/4	14 1/8	8 5/8	13 11/16	8 5/16	13 5/16	8	20 7/8	21 3/4
	mm	992-1143	400	259	383	246	368	235	359	219	348	211	338	203	530	552

MOUNTING GROUP #1

MOUNTING GROUP #2

450 SERIES SURFACE OVERHEAD HOLDER HINGE (PULL SIDE) INSTALLATION TEMPLATE



NOTE:

TEMPLATE NUMBER: INST. 450JP.PG3_1

DATE: 04-15-04